

# Duodenum | Jejunum | Ileum | Colon | Appendix

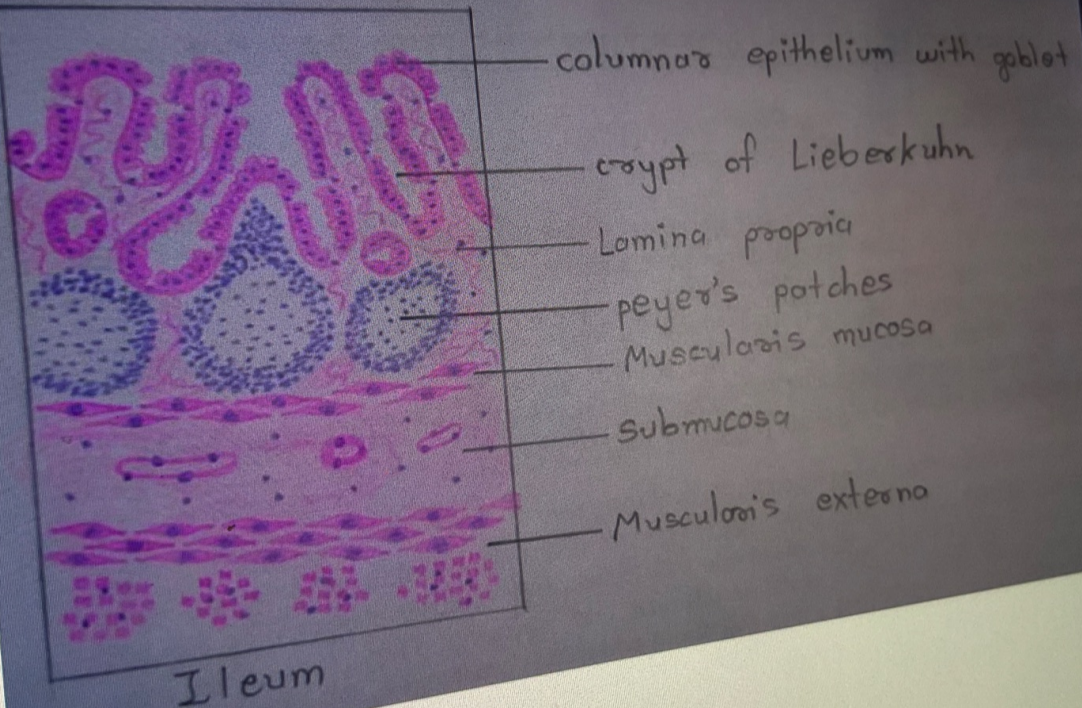
Mucosa → Draw Villi

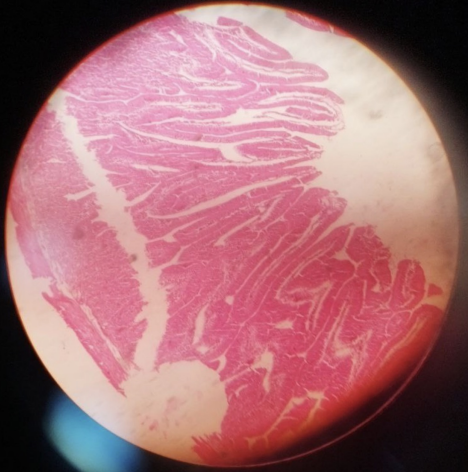
Lamina Propria      Muscularis Interna

↓  
Duodenum - Brunner's Gland

Jejunum - Lymph Node

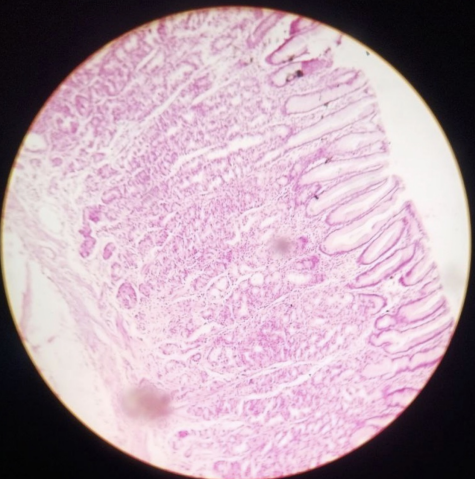
Ileum - Peyer Patches





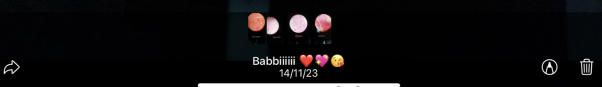
→ Numerous, packed villi

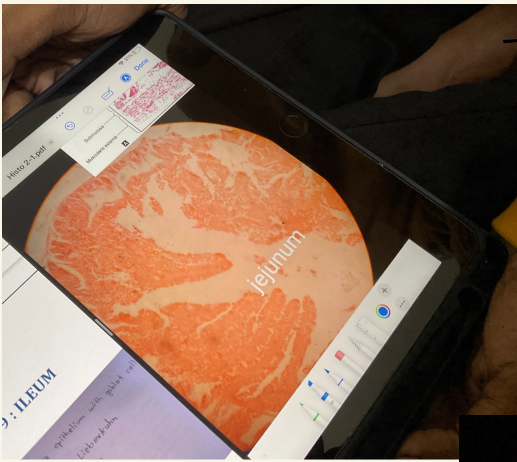
duodenum



Peyer patches ←

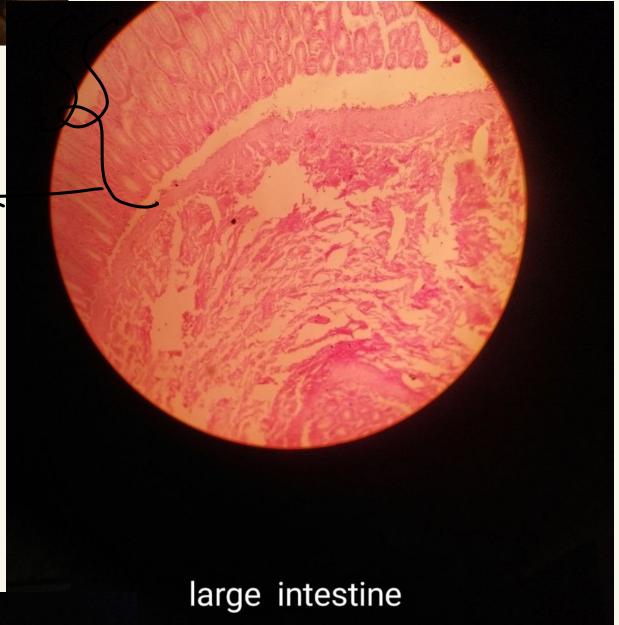
ileum





→ Same as duodenum  
but less Peyer's patches

Globet cells ←



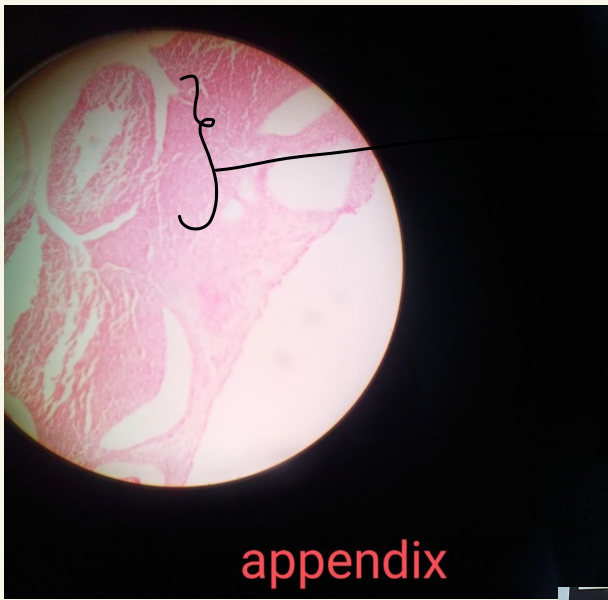
large intestine



→ Tongue

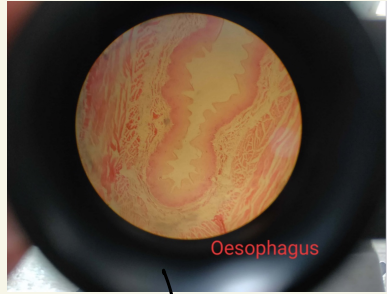
• Like oesophagus, non-keratinized stratified squamous

- Skeletal muscle, Papilla, Dorsum, Ventral



Circular

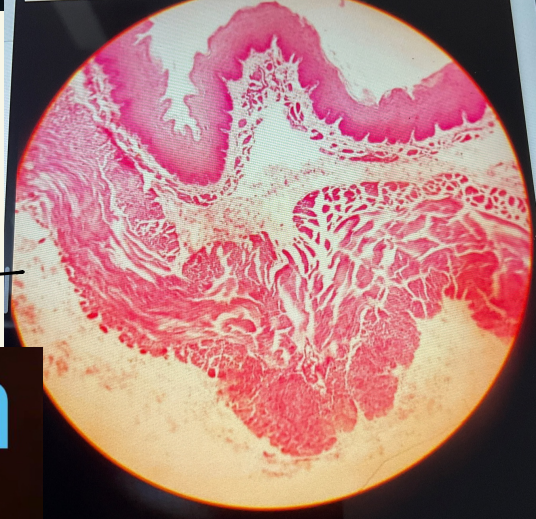
appendix



Oesophagus

Wavy like appearance

Non-Keratinized stratified squamous epithelium

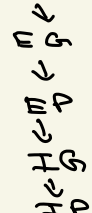


Oesophagus

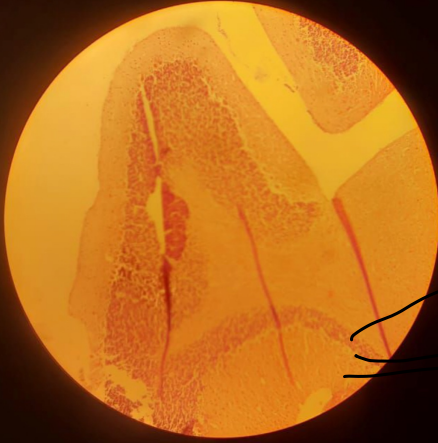
cerebrum



Plexiform / molecular



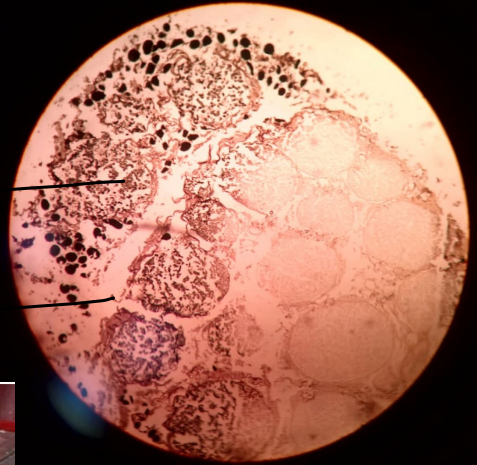
# cerebellum



→ Granule  
→ Purkinje  
→ molecular

Endoneurium ←

Perineurium ←



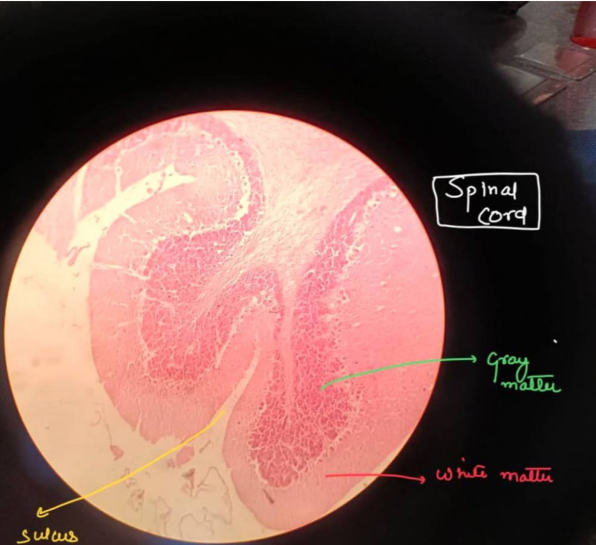
Nerve TS

Spinal  
Cord

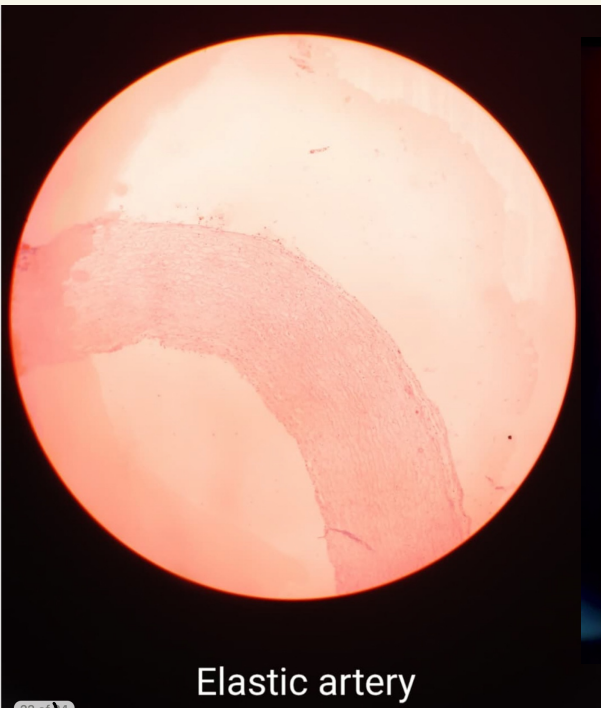
Gray  
matter

White matter

Sulcus

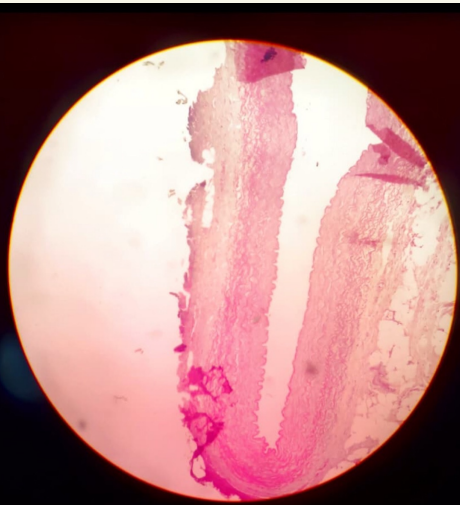


→ Interrupted by  
Septa



Elastic artery

Internal elastic lamina not distinct from elastic fibres of media



Muscular Artery

Stands distinctly from media,

wavy → Fibroblast Endothelium

CT (sub endothelium)

IEL

SM → EEL

(Fibrous) TA

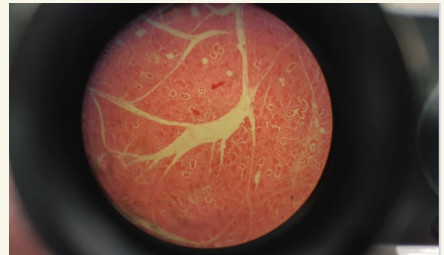
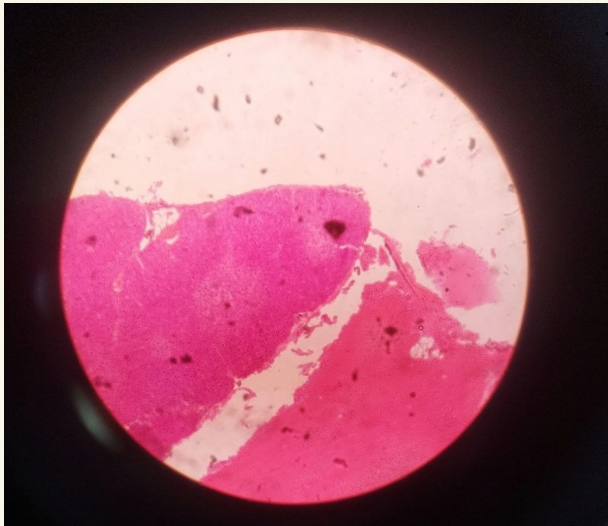
→ Thymus

Lobulation,

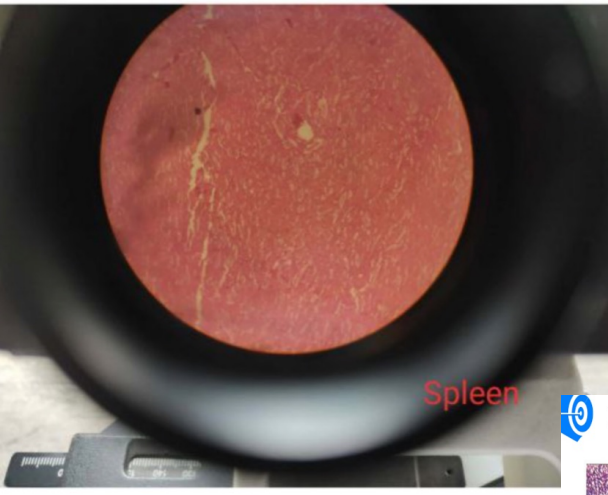
Dark cortex, light

medulla

Mazzoni's corpuscles



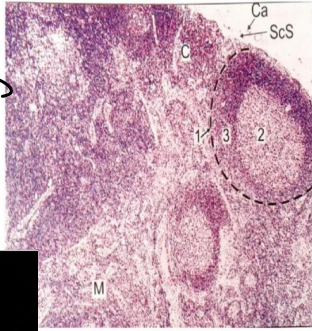
Thymus



Spleen

→ Arteriole in each nodule  
 → Red pulp, white pulp  
 / Diffuse                      Cortex / medulla

IDEAL SLIDE :

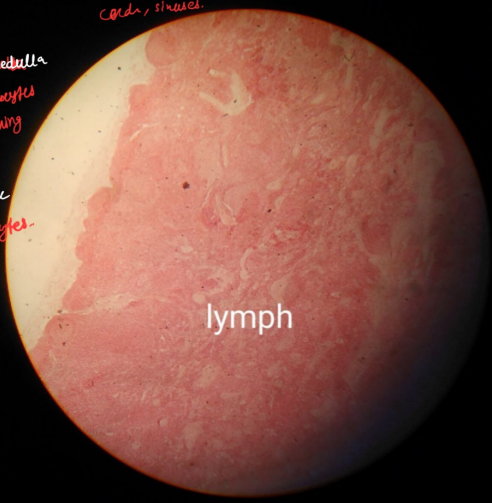


- Lymph node :**
1. Lymphatic nodule
  2. Germinal centre
  3. Zone of dense lymphocytes
- C. Cortex  
 M. Medulla  
 Ca. Capsule  
 Scs. Subcapsular sinus

Lymph Node →

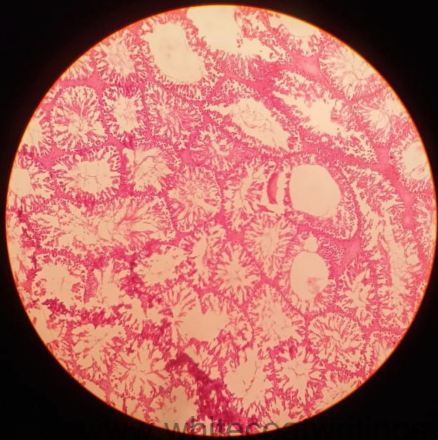
\* fibrous capsule & subcapsular sinus is thin  
 \* outer cortex → lymphoid follicles  
 inner medulla contains medullary cords, sinuses.

Inner medulla  
 B-lymphocytes  
 branching cords.  
 postcortex  
 T-lymphocytes.



lymph

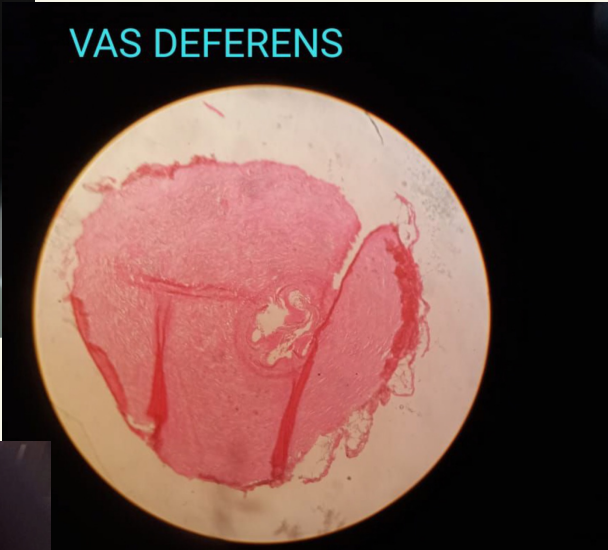
TESTIS



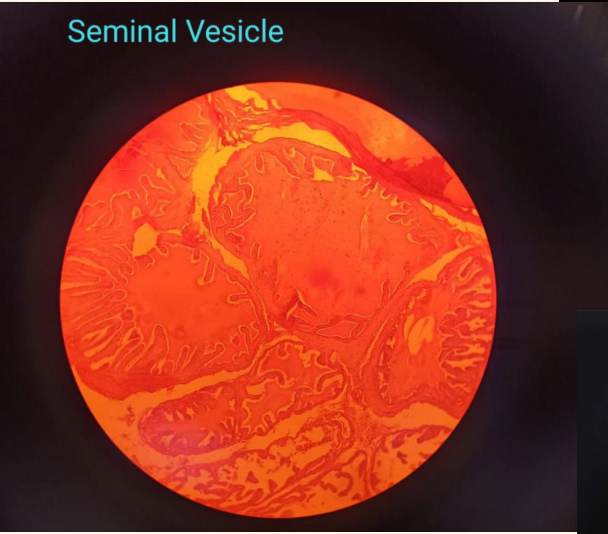
Waller's



Epididymis



VAS DEFERENS

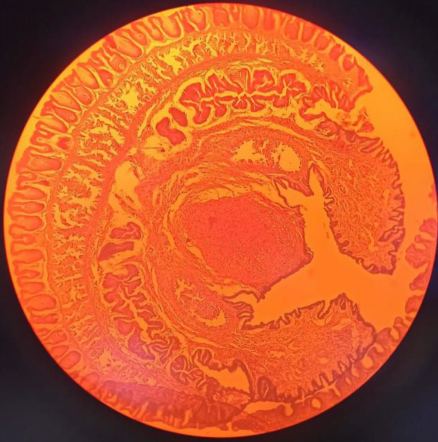


Seminal Vesicle





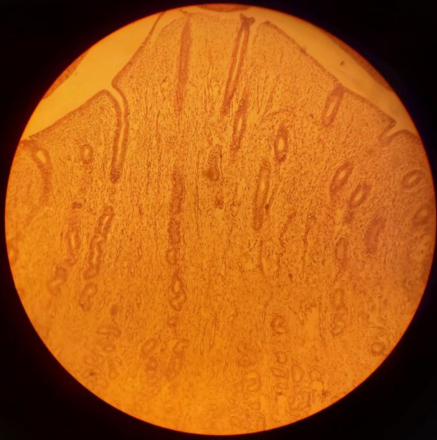
Penis with Urethra



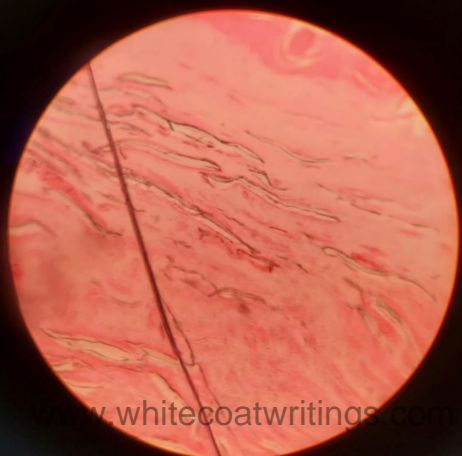
Ovary



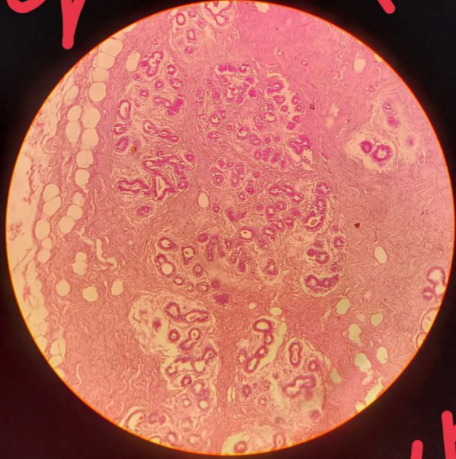
uterus



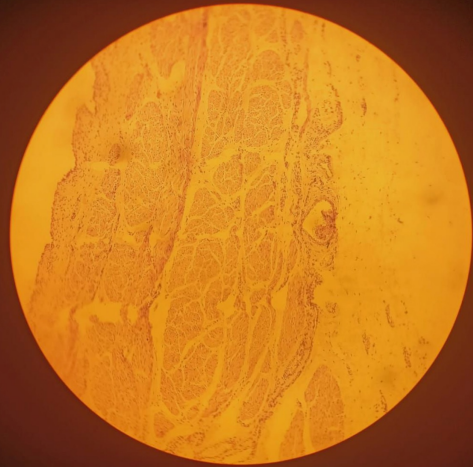
vagina



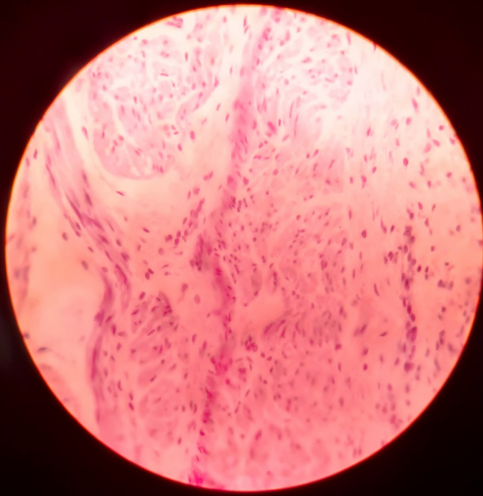
mammary gland



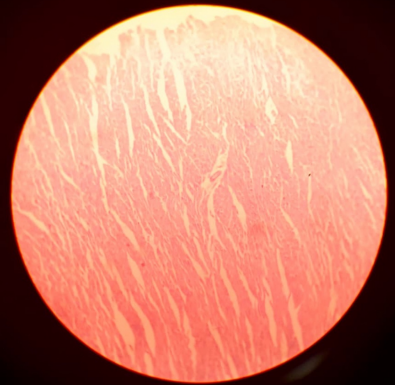
10x



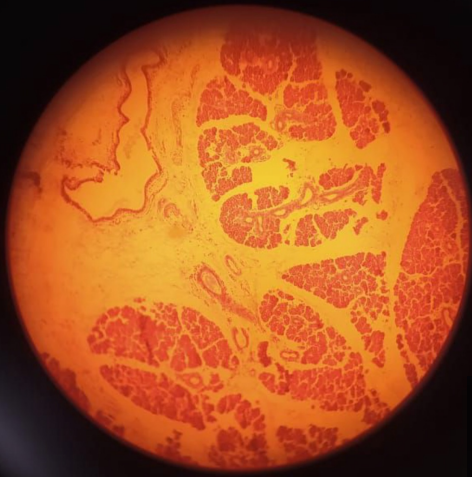
smooth muscle



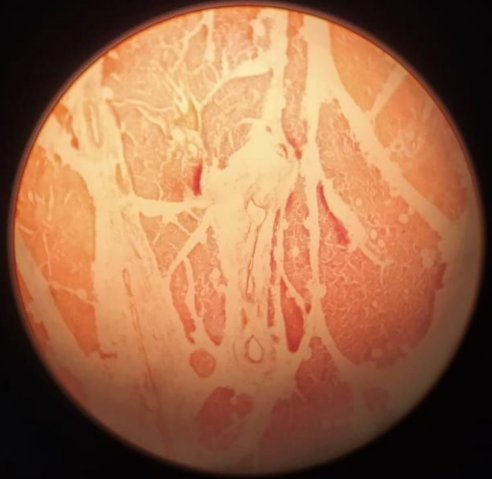
Smooth muscle



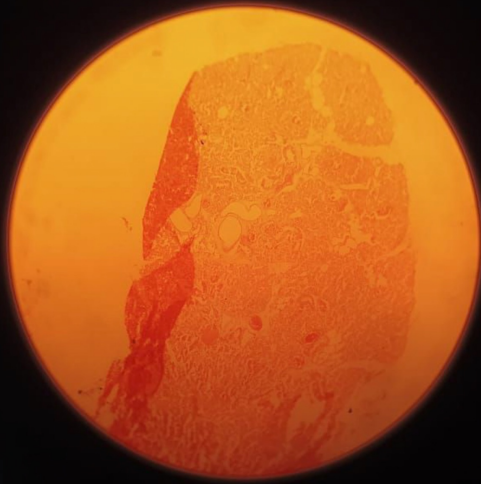
Cardiac muscle



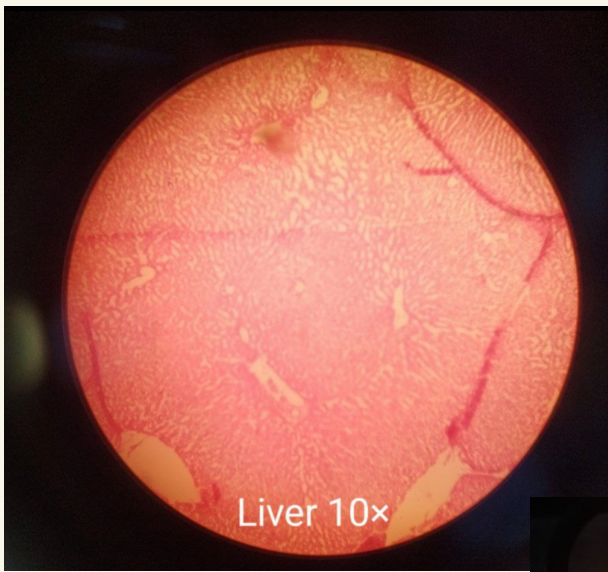
parotid



sub mandibular



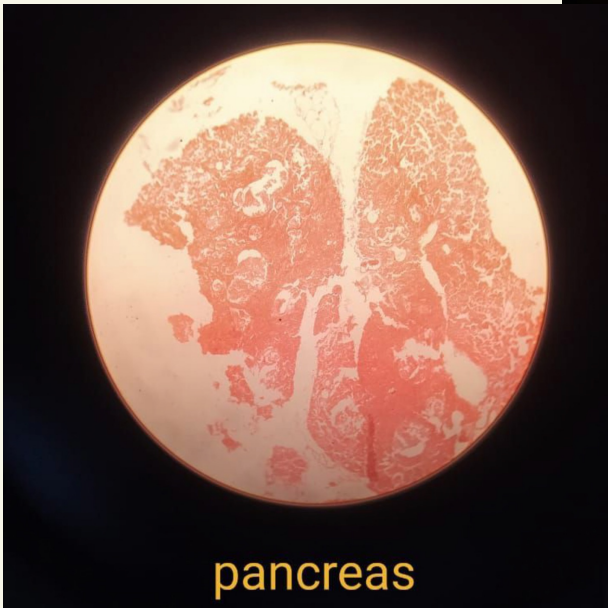
sublingual



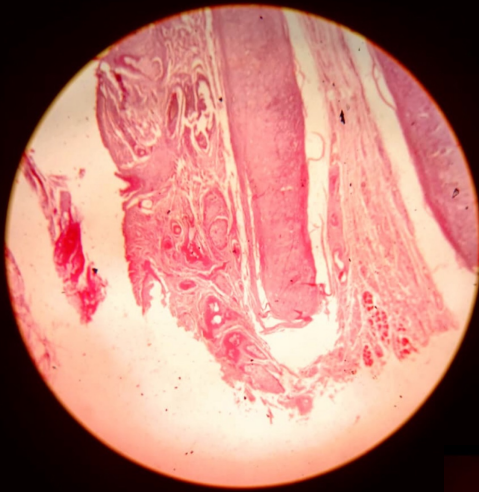
Liver 10x



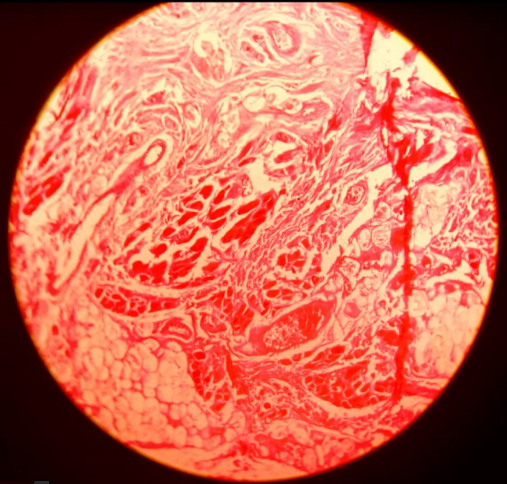
gall bladder



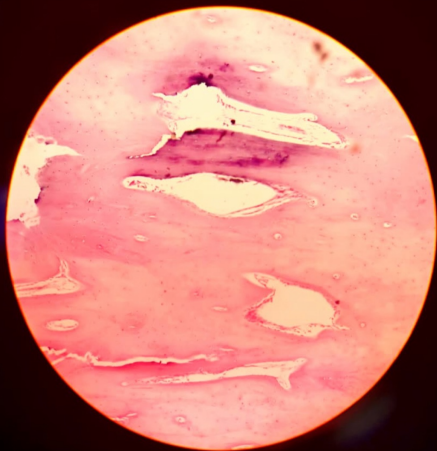
pancreas



Elastic cartilage

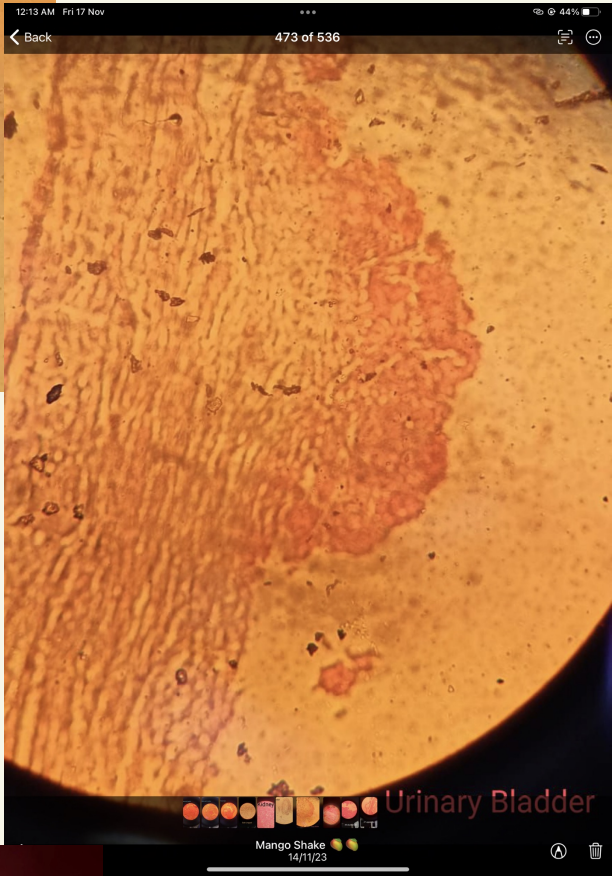


Hyaline cartilage



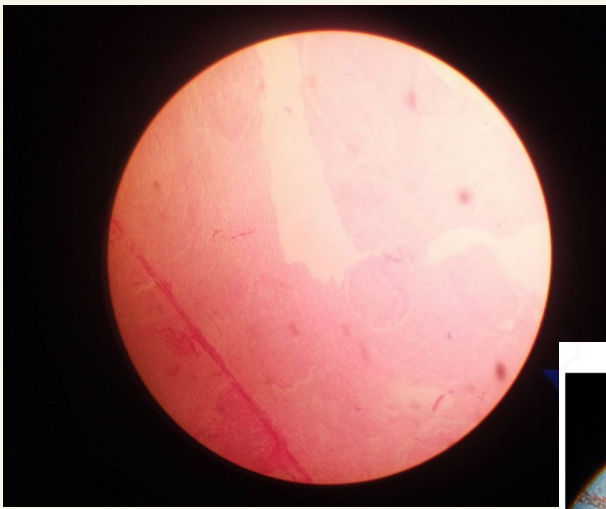
Bone (Decalcified)

Ureter

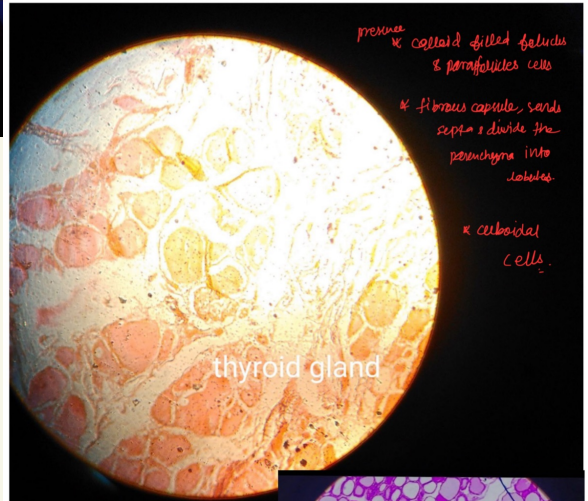
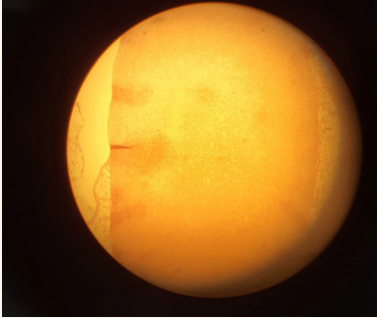


Kidney

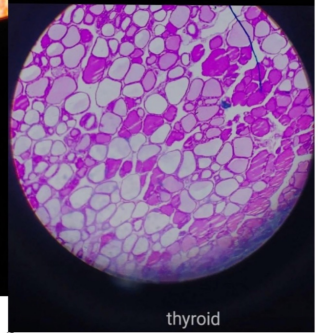




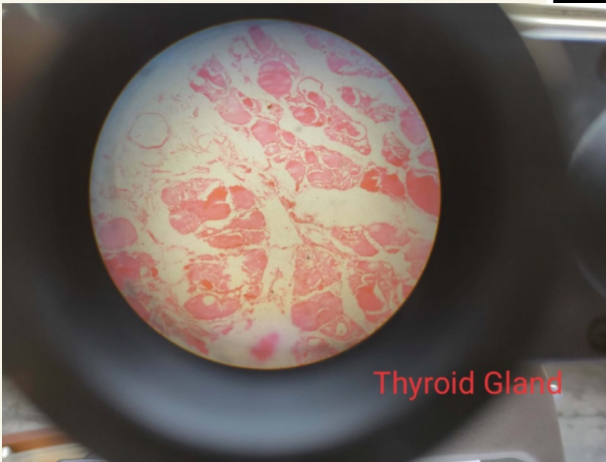
adrenal gland



thyroid gland



thyroid



Thyroid Gland

