

- Panniculus Carnosus
- ↳ Thin muscle sheath in lower animals
- ↳ Lower animals can move skin say if itching or not
- ↳ We can't

FACE

- Mumps is swelling of parotid gland
- ↳ Painful as fascia doesn't allow to expand
- ↳ nerve irritated

Date / /
Page No.

→ Skin:- Thick, elastic & vascular
 ↳ Hence bleeds profusely say injury by shaving

→ Superficial Fascia - contains (muscles of facial expression) - CN VII (Facial nerve)

- ↳ Variable amount of fat
- ↳ Absent in eyelids
- ↳ More in buccal region ^{↳ cheek}
- ↳ Prominent in new born ^{↳ subcuticular pad of fat}

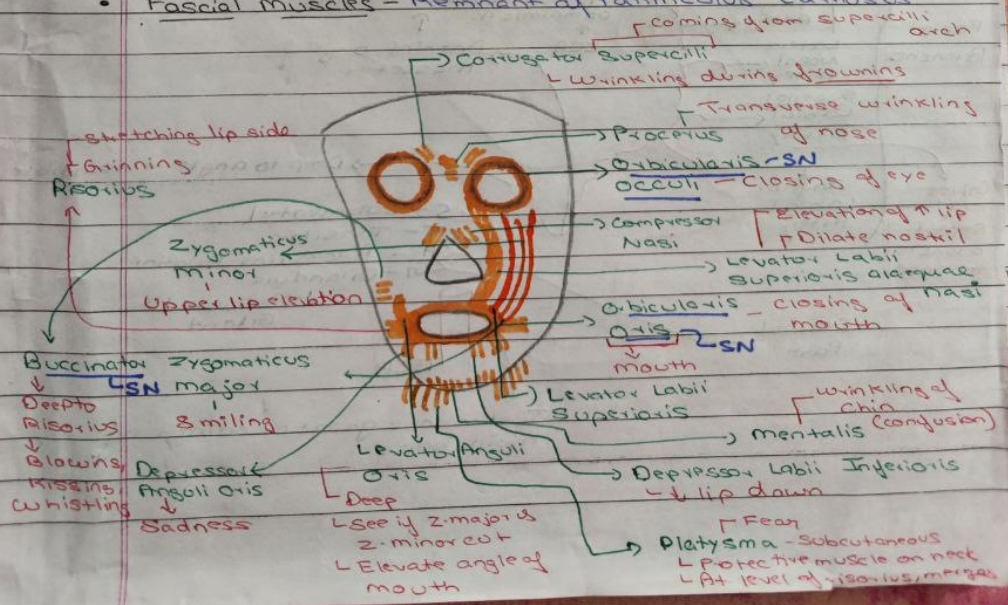
→ Deep Fascia - Absent ^{↳ also absent in ant. abdominal wall}

↳ Reason:- For facial expression, facial muscle needs to come outside & if deep fascia is present, they won't be able to

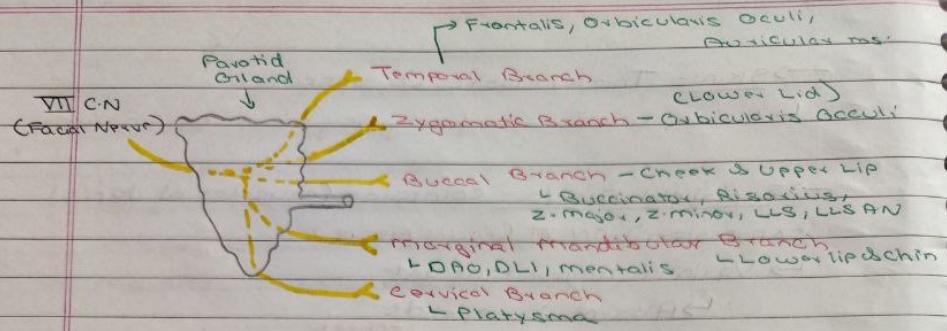
↳ Absent except on parotid gland ^{↳ Parotid masseteric fascia}
^{↳ muscle on which gland rests}

↳ Subcutaneous

• Facial muscles - Remnant of Panniculus Carnosus



- Some people can move their ear due to a muscle around the ear. (Remnant)
- In facial nerve paralysis, lips turn one side due to paralysis of facial nerve of other side.

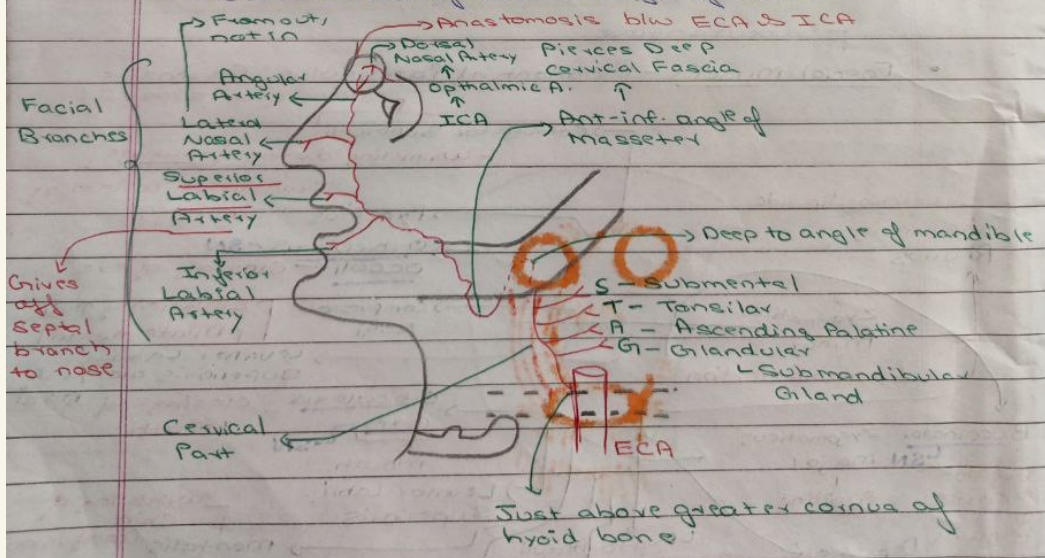


★ BLOOD SUPPLY

↳ If blood supply asked, then write venous drainage too apart from arterial supply

Facial Artery

- ↳ Direct Branch of external carotid artery
- ↳ Tortuous
- ↳ Close to ala of nose & angle of mouth



★ At ant-inf. angle of masseter, we can feel pulsation of facial artery

↳ Anaesthetist can use this artery too to check pulsation say if crowd
↳ Anaesthetist Artery

Date / /
Page No.

★ Clinical:

• Why facial artery is tortuous?

↳ No protection from deep fascia
↳ Tortuous provides extra length which prevents rupture from repeated action of muscles

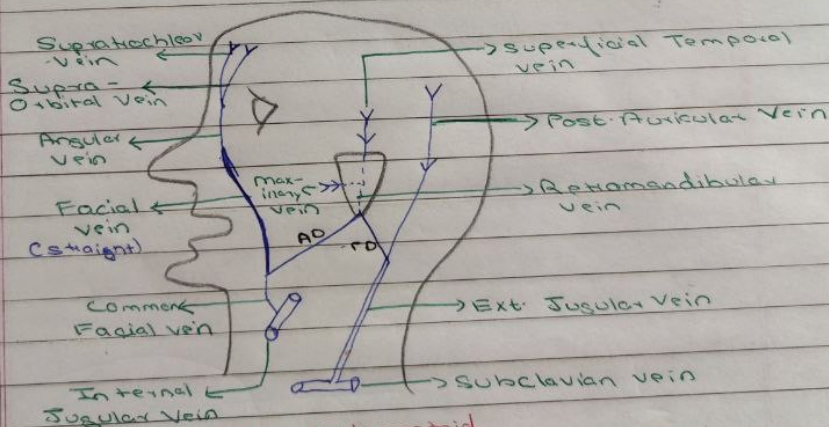


→ Dangerous Δ of face
↳ Include nose & upper lip
↳ Where Sup. Ophthalmic & Deep Facial Vein are going inside ultimately connecting to cavernous sinus

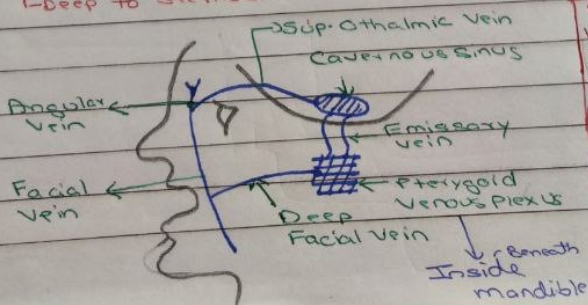
• Why facial vein isn't tortuous?

↳ Not running with artery, more posteriorly
↳ If BV away from midline, not subjected to too much traction, hence not tortuous

VENOUS DRAINAGE



↳ Deep to sternocleidomastoid



Hence told not to burst pimples as no valves so pus can go to cavernous sinus too

No valves so infection can spread either way

