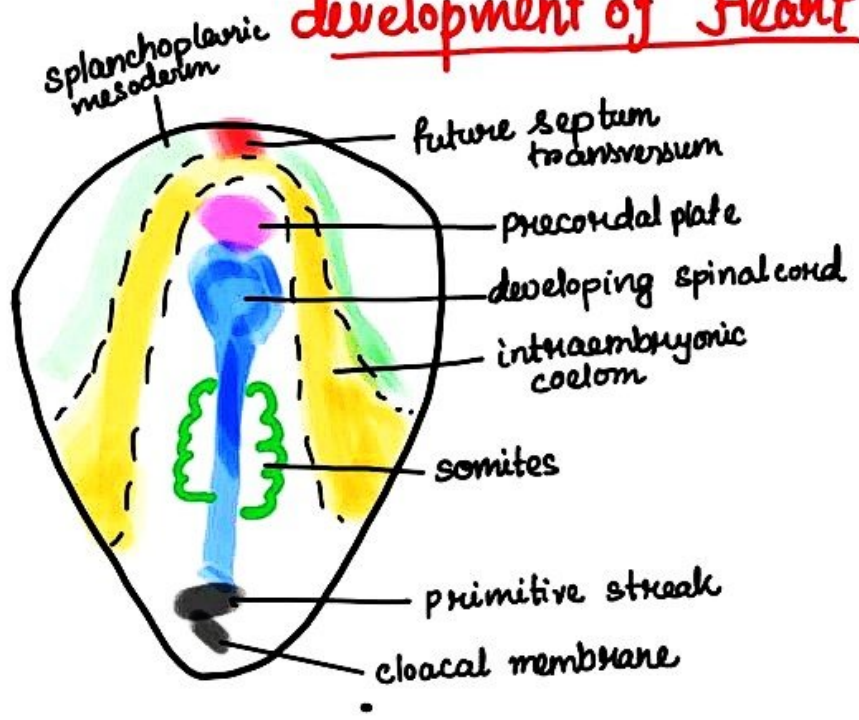
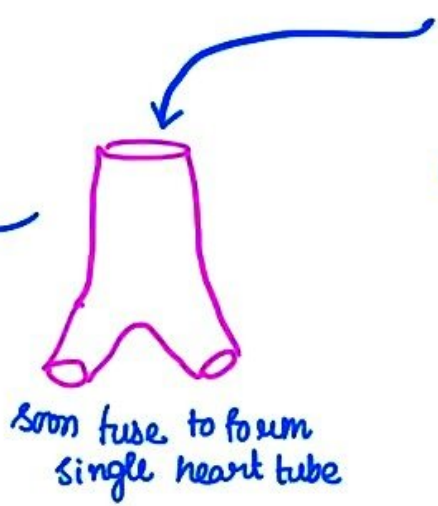
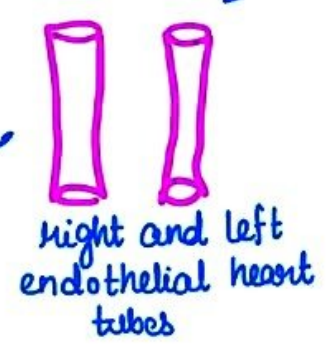
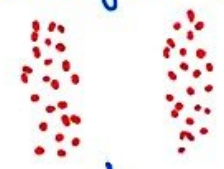


# development of Heart



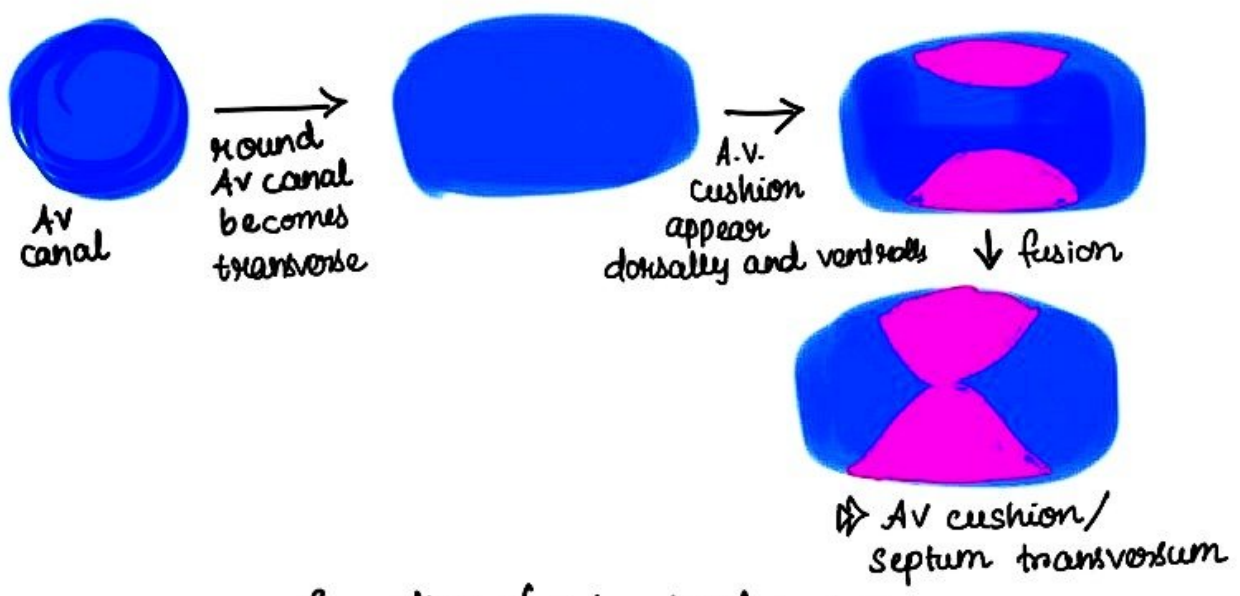
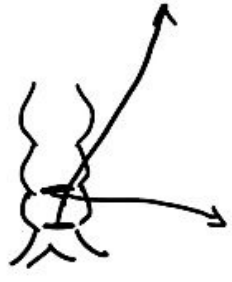
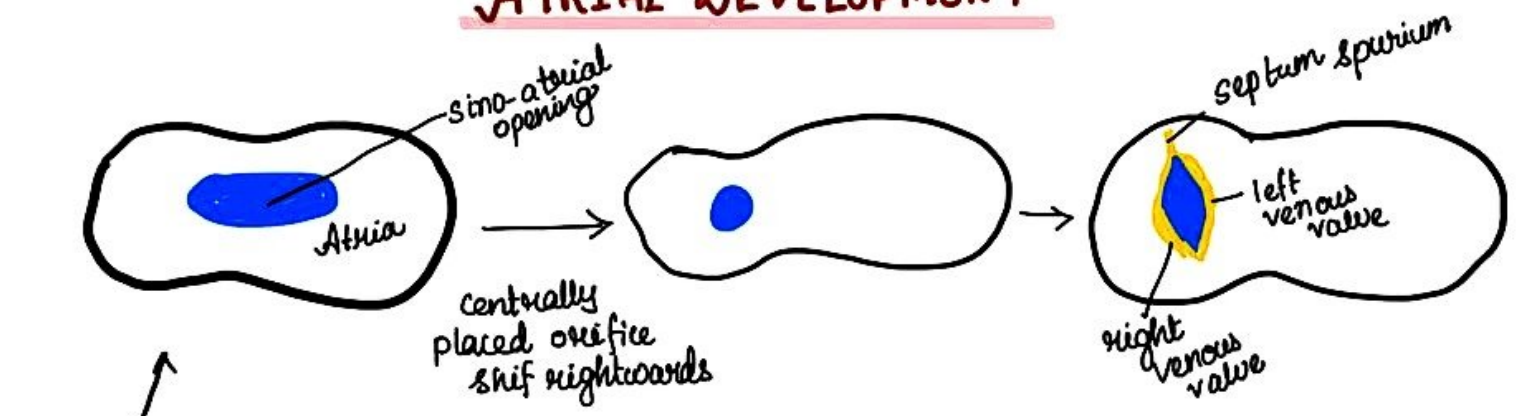
• heart develops from splanchnopleuric mesoderm of lateral mesoderm, cranial to intra-embryonic coelom.

↳ Cardiogenic area

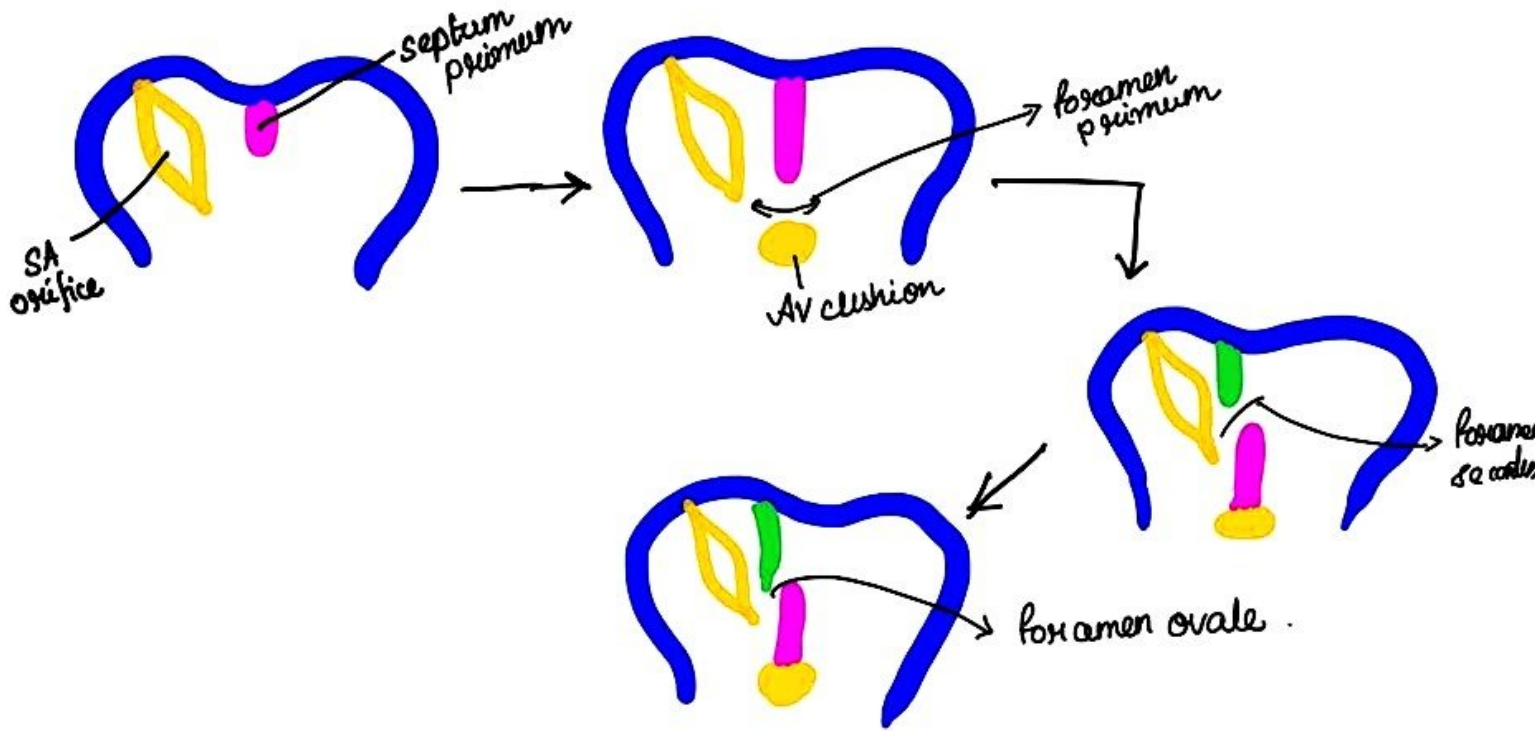


## . ATRIAL DEVELOPMENT

# ATRIAL DEVELOPMENT



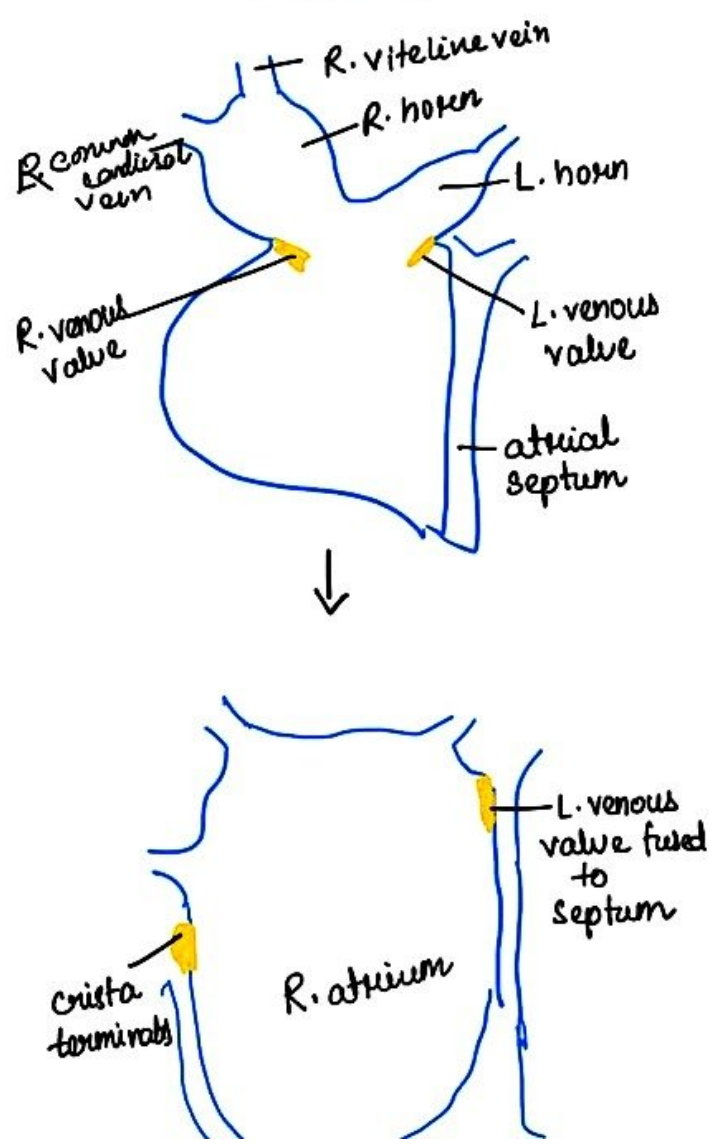
## formation of interatrial septum



### Right Atria development

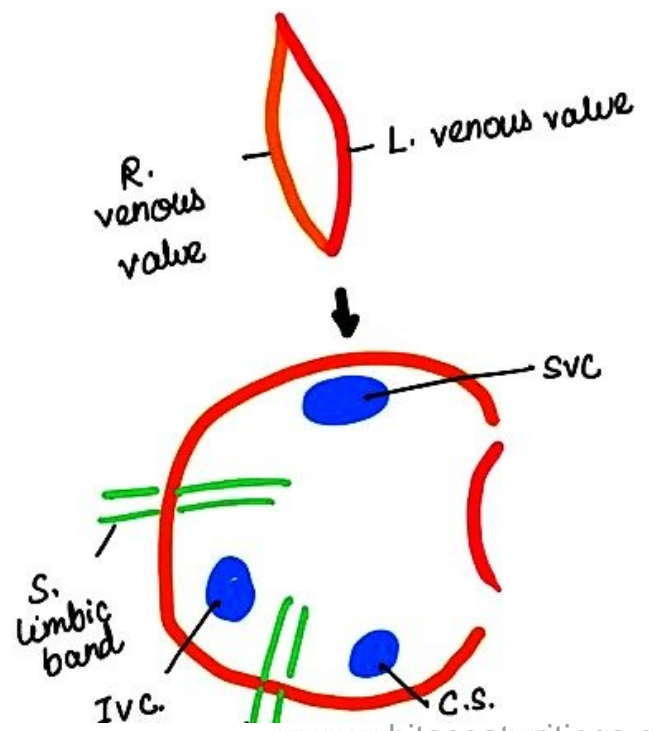
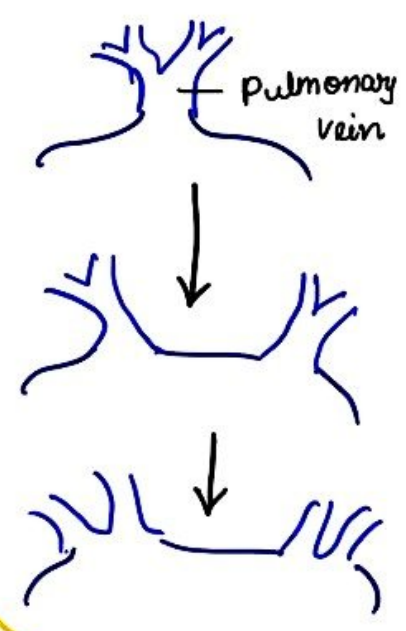
- right half of primitive atrium develops
- sinus venosus absorbed by enlargement of SA orifice
- absorption of right side of AV canal.
- Ⓜ common cardinal vein → SVC
- Ⓜ vitelline vein → IVC

Left venous valve → fuses with atrial septum  
 right venous valve  
 ↳ crista terminalis  
 valve of IVC and coronary sinus



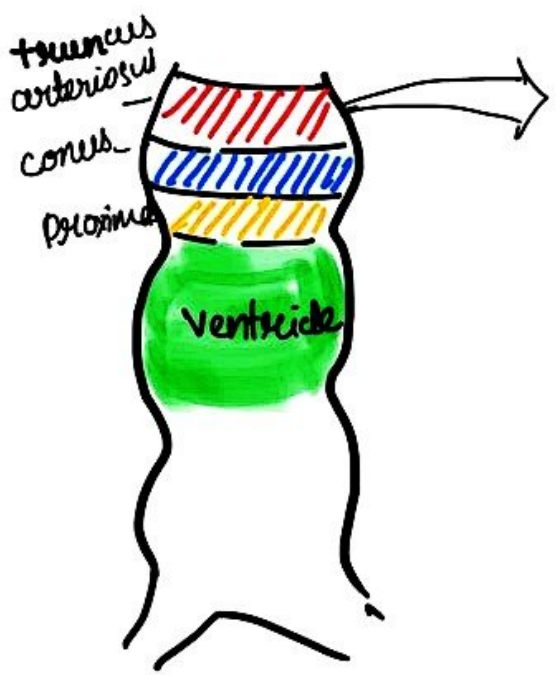
### Left atria development

- derived from left half of atrial chamber
- absorbed left AV canal
- absorbed proximal parts of pulmonary veins.





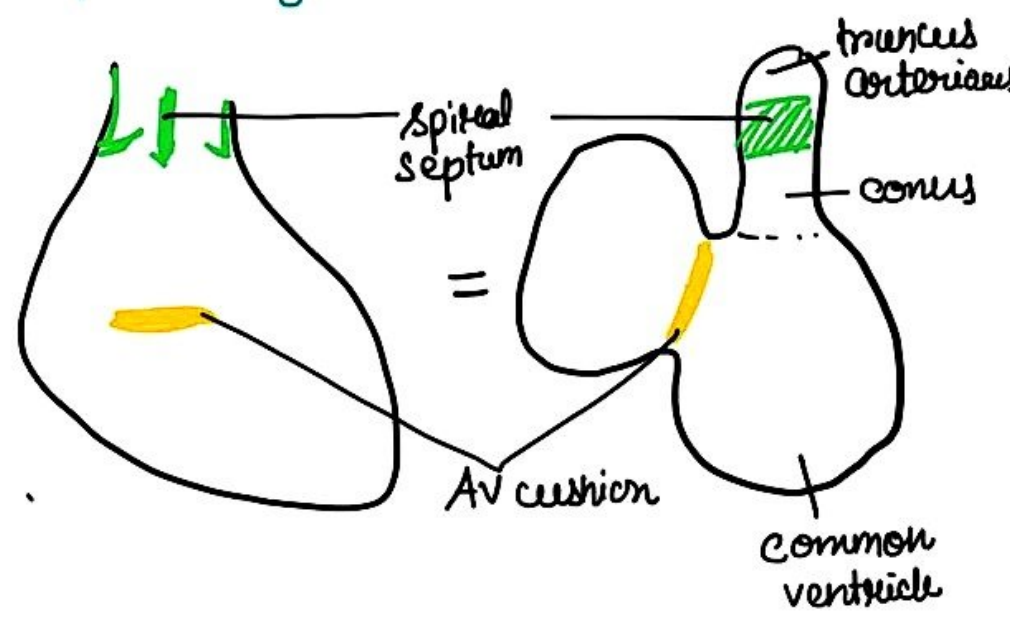
# VENTRICULAR DEVELOPMENT



right superior and left inferior truncus swelling appear

↓ fusion

separates ascending aorta and pulmonary trunk



- conus forms outflow part of both ventricle
- proximal part of bulbar cordis merges with primitive ventricle → common ventricle
- ↳ Right ventricle inflow
- ↳ Left ventricle inflow

## Formation of Interventricular Septum

①

1. interventricular septum arises from

inflow

inflow

# Formation of Interventricular Septum

①

a interventricular septum arises from subventricular cavity's floor

↓ moves upwards

# muscular part

meets with AV cushion

②

in conus, ② and ① bulbar ridges forms

↓ move towards each other

fuses to form bulbar septum

③

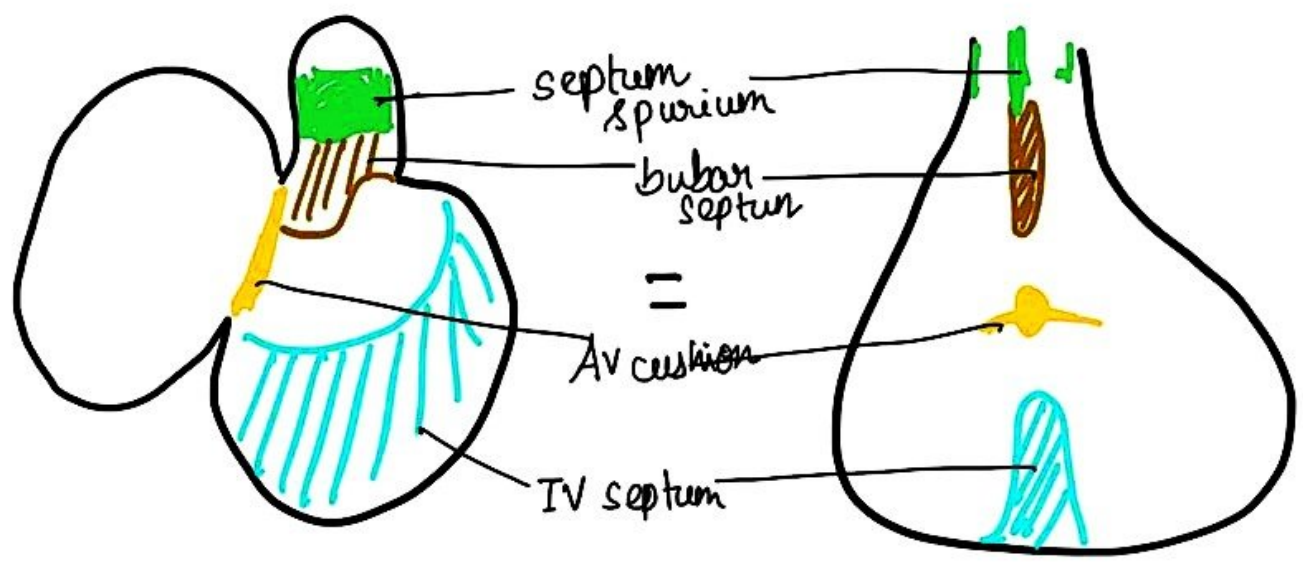
AV cushion cells proliferate to cover the gap

small gap

↑ almost reach IV septum

↓ grows downwards

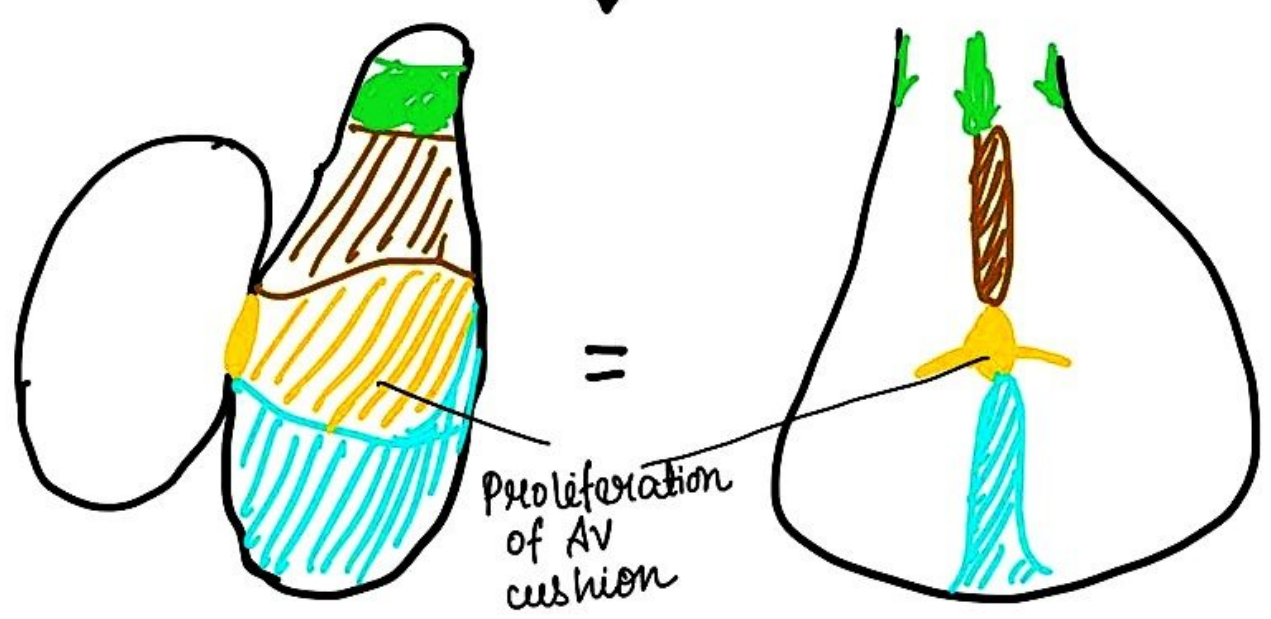
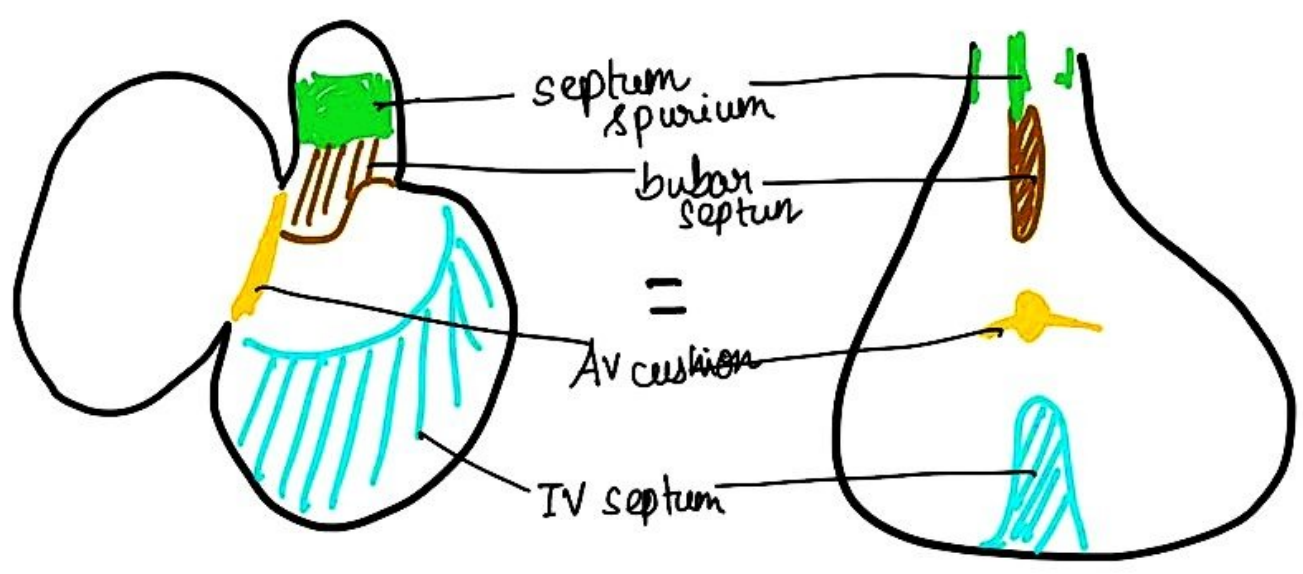
**INTER VENTRICULAR SEPTA**



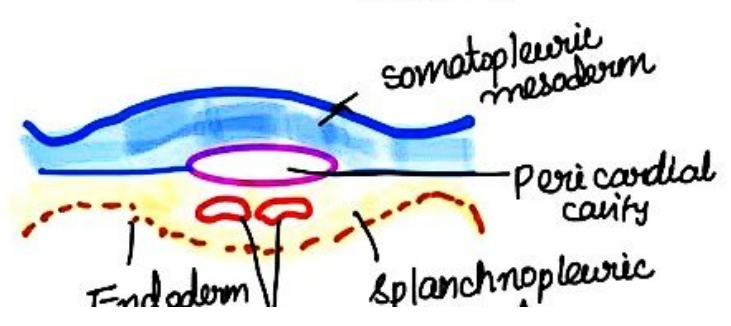


Confirm iPad Passcode  
To continue using iCloud, confirm your new iPad passcode.

now

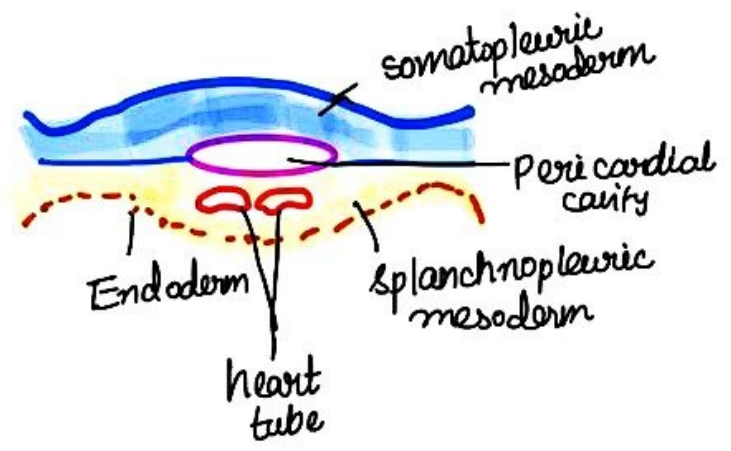


### CARDIAC LOOPING

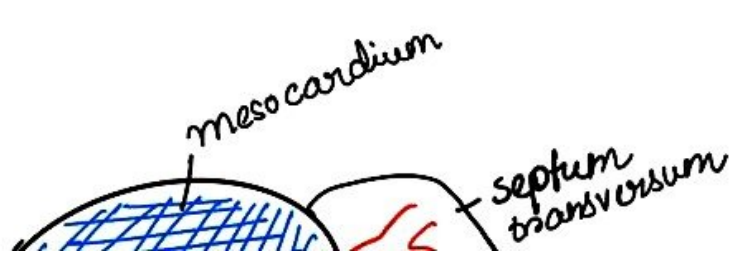
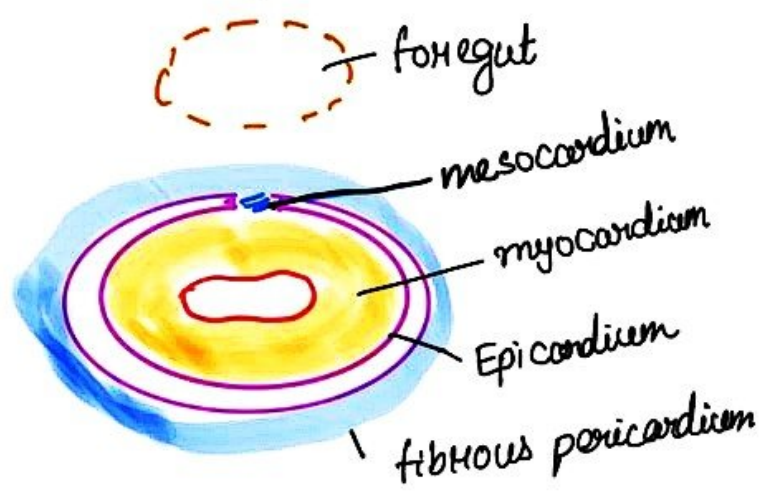
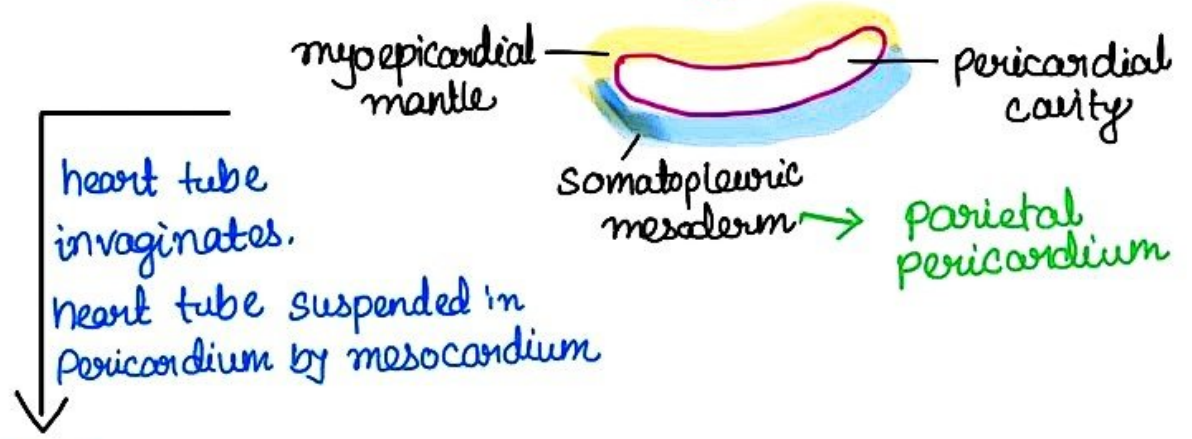
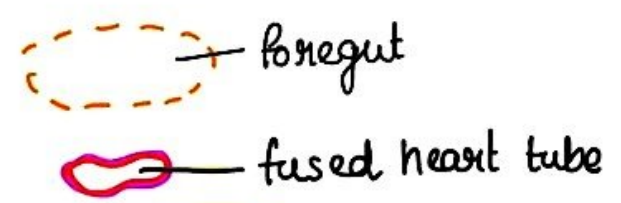


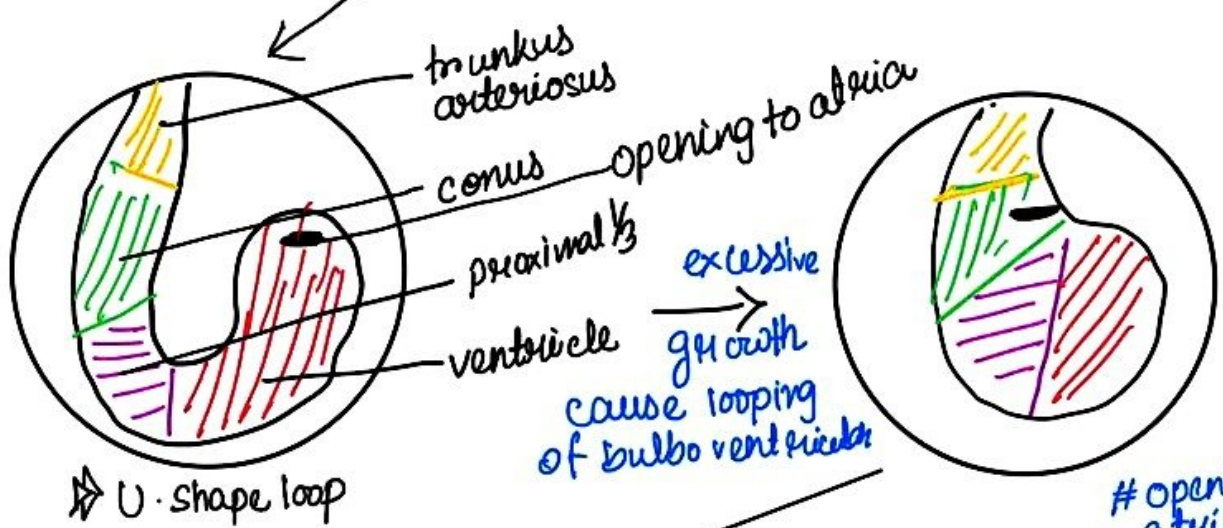
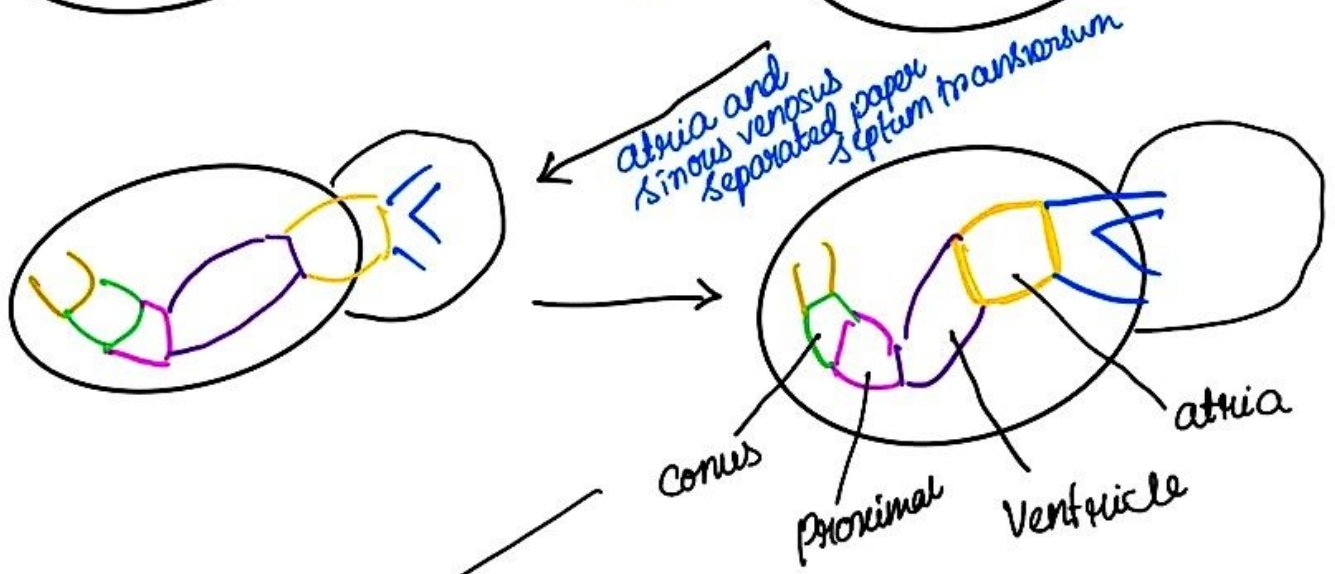
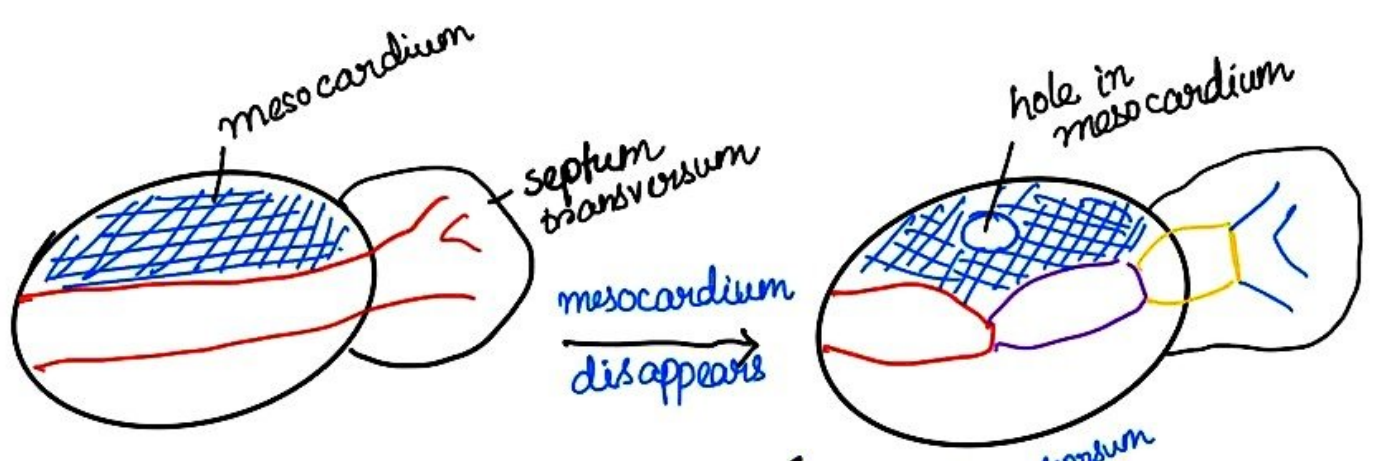
heart tube situated ventral to foregut and dorsal to pericardial cavity after heart fold

# CARDIAC LOOPING

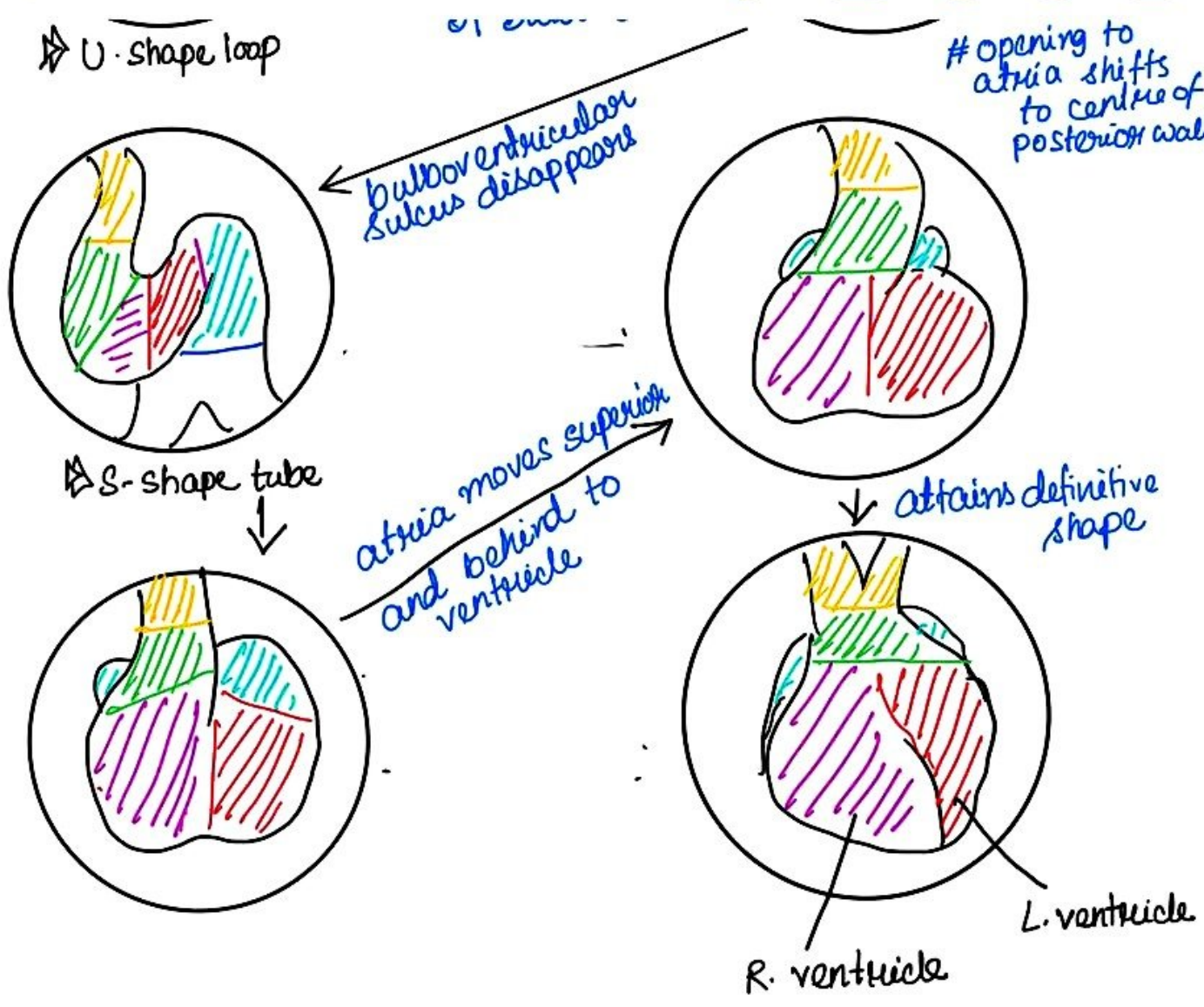


heart tube situated ventral to foregut and dorsal to Pericardial cavity after head fold









### Fallot's tetralogy ⇒

- Interventricular septal defect
- Aorta overriding ventricular septum
- pulmonary stenosis
- hypertrophy of right ventricle.