

# Cranial Cavity & Meninges

↳ Filamentous Process

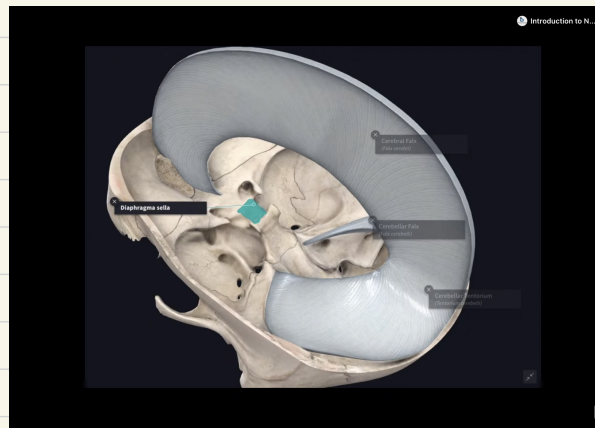
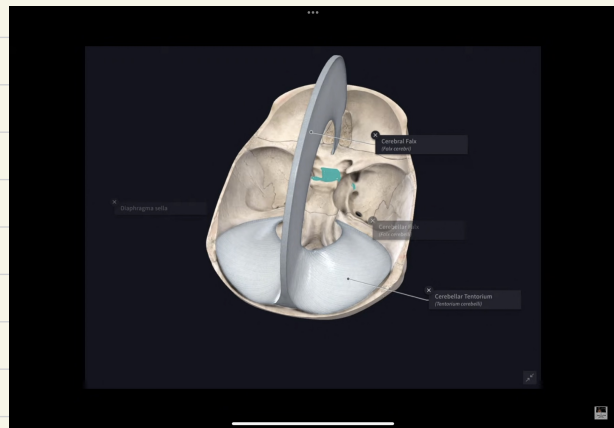
Out to In: Dura → Arachnoid → Piamater

## DURA MATER

↳ Outer Endosteal, Inner Meningeal

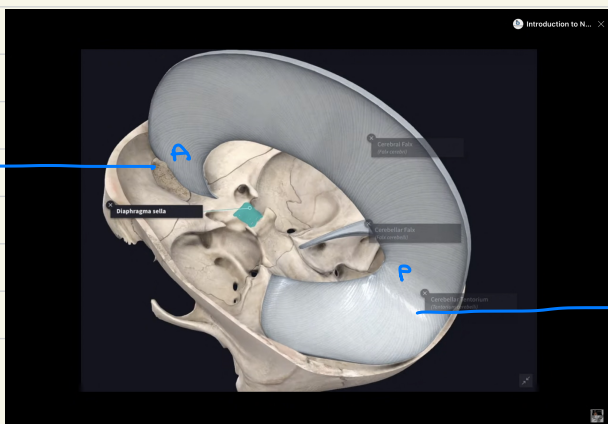
↳ 2 layer fused except where they enclose venous sinuses

- ↓  
Folds
- ↳ Falx Cerebri
  - ↳ Tentorium cerebelli
  - ↳ Falx cerebelli
  - ↳ Diaphragm sellae



- Falx Cerebri (Sickle shaped)
- ↳ occupy median longitudinal fissure

Crista Galli

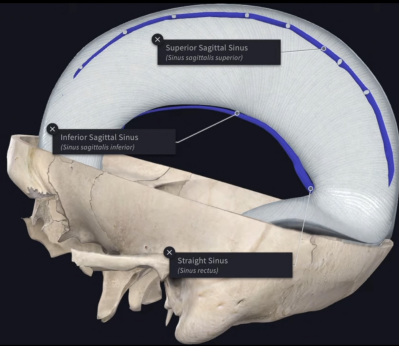
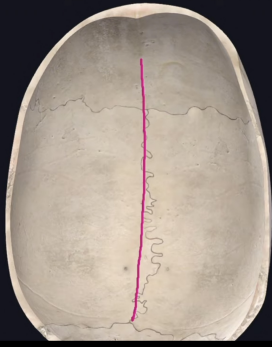


↳ UPPER  
P  
TENTORIAL  
TENTORIAL  
Cerebelli  
coatwritings.com

→ Upper lip to sagittal sulcus of skull vault

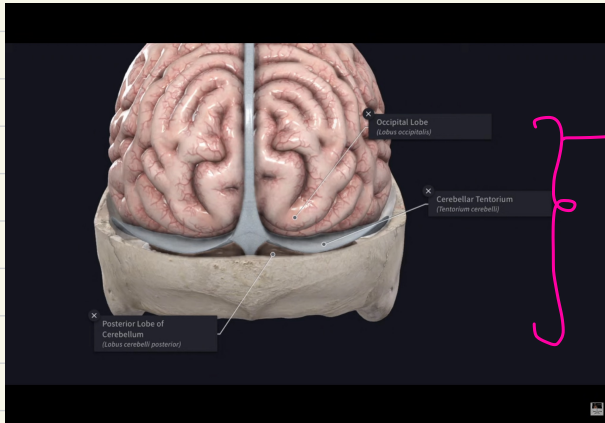
- Lower concave margin

y-r-c  
↳ above corpus callosum

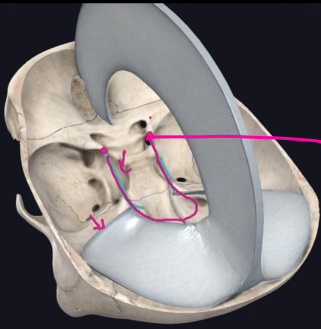


• Tentorium Cerebelli (Roof of posterior cranial fossa)

↳ Transverse Sinus, Superior Petrosal Sinus, Straight Sinus



→ Separate cerebellum from Occipital lobe



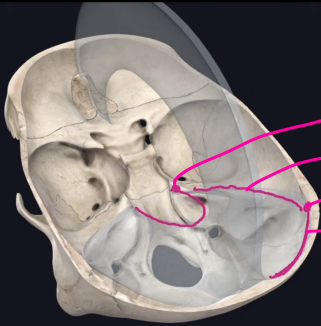
→ Inner free margin U shape

→ Tentorial notch for passage of midbrain

→ Ant. clinoid process

→ Meckel's Cave

Outer Attached margin ↓



→ Post. Clinoid process

→ Sup. border of pituitary bone

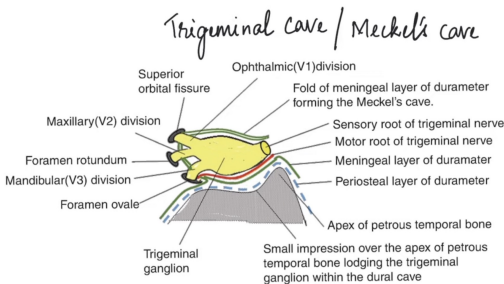
→ Post. inferior L of parietal bone

→ Lips of transverse sulci on occipital bone

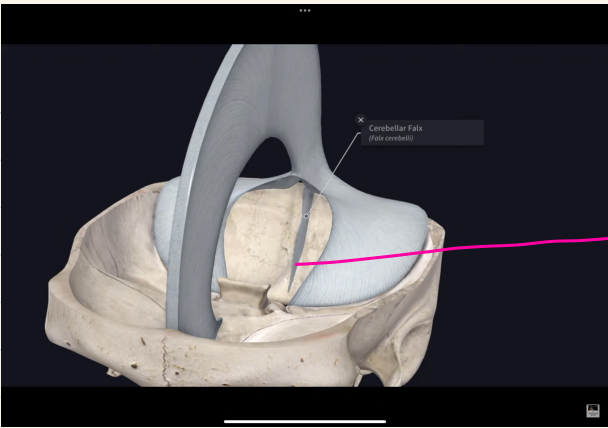
→ Recess of dura mater

→ Related to attached outer margin of tentorium cerebelli

→ Evagination of meningeal layer of dura mater by two roots of trigeminal nerve



## Falk Cerebelli



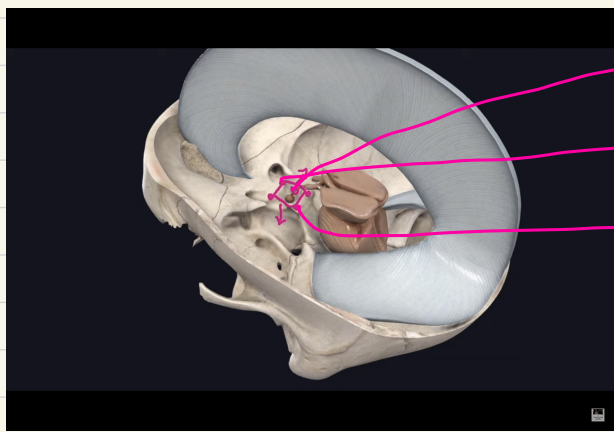
- Int. occipital protuberance along int. occipital crest to post. margin of foramen magnum

### • Occipital Sinus

→ Project forward into post. cerebellar notch

- Free Concave Anterior
- Convex Attached Posterior

## Diaphragm Sella



→ Passage to stalk of pituitary gland

→ Tuberculum Sella

→ Dorsum Sella

↳ supratentorial  
Ophthalmic nerve

## Blood Supply

- ACF - Meningeal branch of ophthalmic, A & P ethmoidal artery & branch of middle meningeal artery

- MCF
  - ↳ M - middle meningeal
  - ↳ A - Accessory meningeal
  - ↳ H - Internal carotid branch
  - ↳ P - Ascending pharyngeal

- PCF - meningeal branch of vertebral & occipital

↳ outer layer,  
inner layer fibrous, & blood vessel.

## Nerve Supply

- ACF - A & P ethmoidal nerve  
↳ some maxillary nerve

- MCF - Meningeal branch of maxillary & mandibular nerve

- PCF - meningeal branch of vagus & hypoglossal  
↳ C1 & C2 fibres